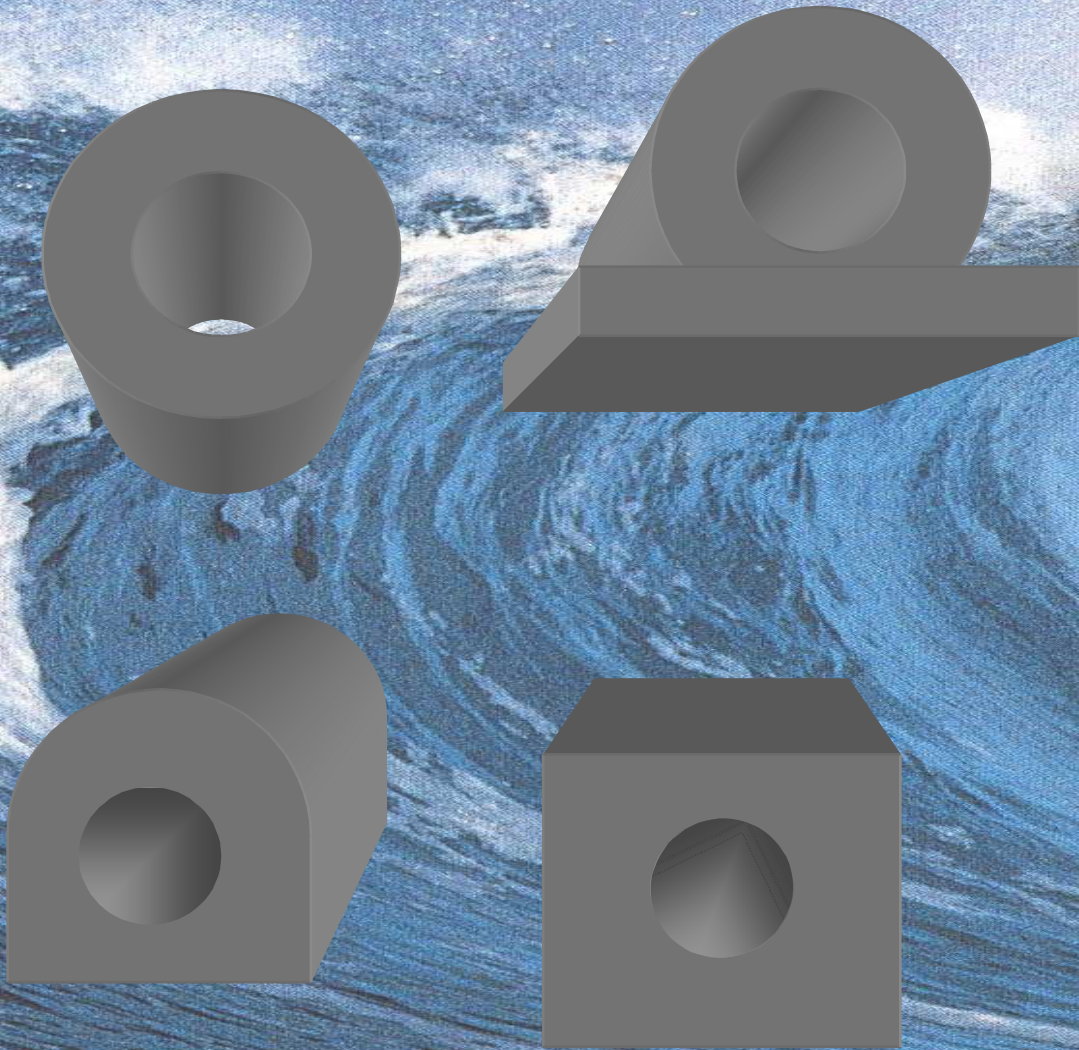


EXTRUDED FENDERS



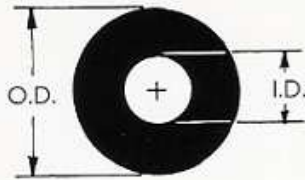
EXTRUDED FENDERS

Morse Rubber

EXTRUDED FENDERS

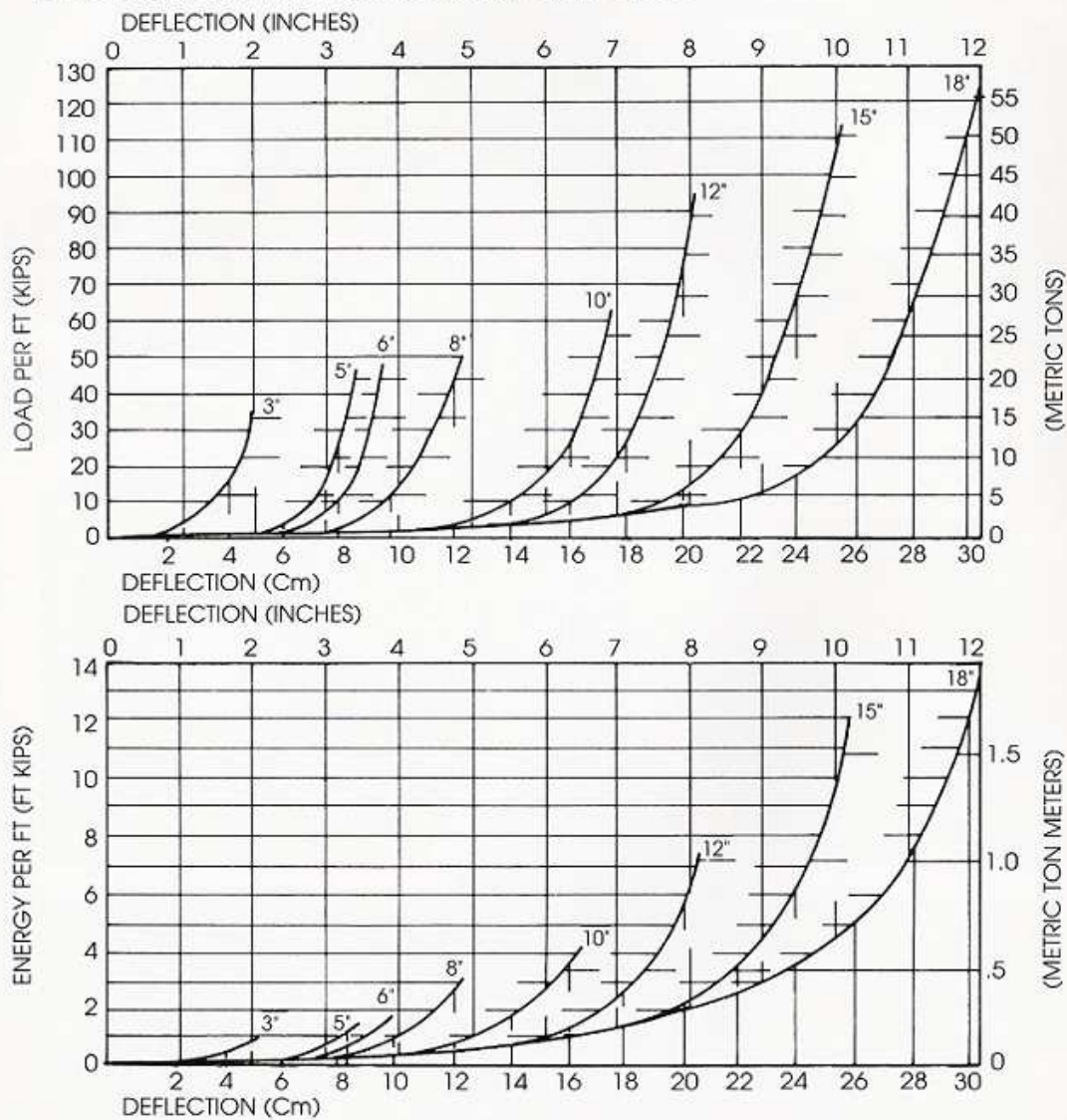
CYLINDRICAL TYPE

LENGTHS UP TO 20 FT. OTHER DIAMETERS AVAILABLE ON REQUEST.



PART N°	O.D.	I.D.	Wt/Ft	R/E
UNITS	INCHES		lbs.	Kip/Ft Kip
F3-0000	3	1.5	3	14
F3-8000	5	2.5	7	10
F3-9000	6	2	14	11
F3-1000	8	4	18.5	10
F3-2000	10	5	30	6.2
F3-5000	12	6	42.5	5.3
F3-6000	15	7.5	68.5	3.5
F3-3000	18	9	97.5	2.9

APPROXIMATE LOAD, ENERGY, AND DEFLECTION CURVES FOR MORSE STANDARD CYLINDRICALS

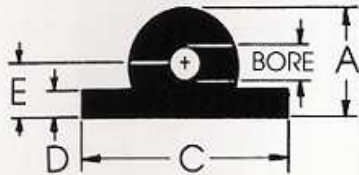


Morse Rubber

EXTRUDED FENDERS

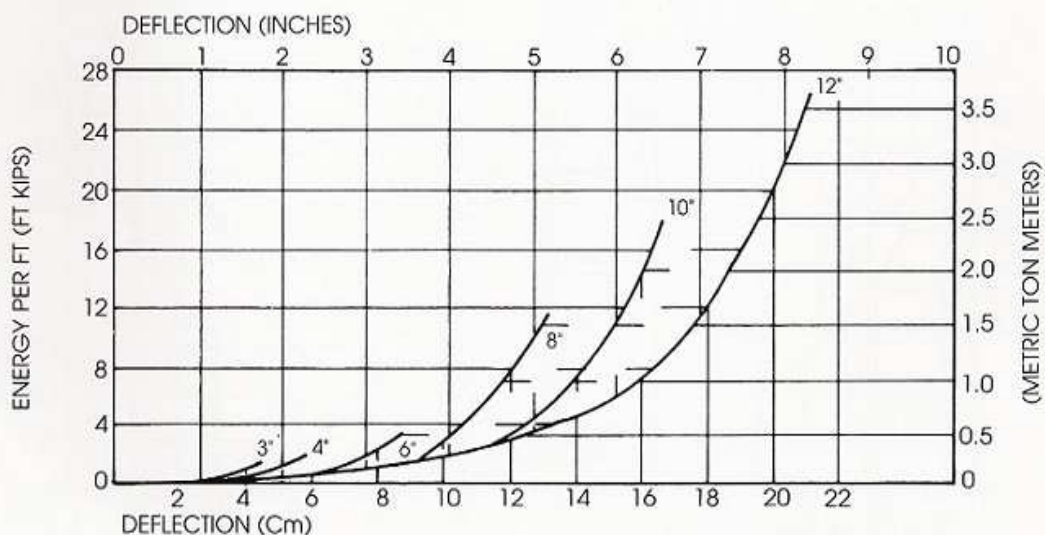
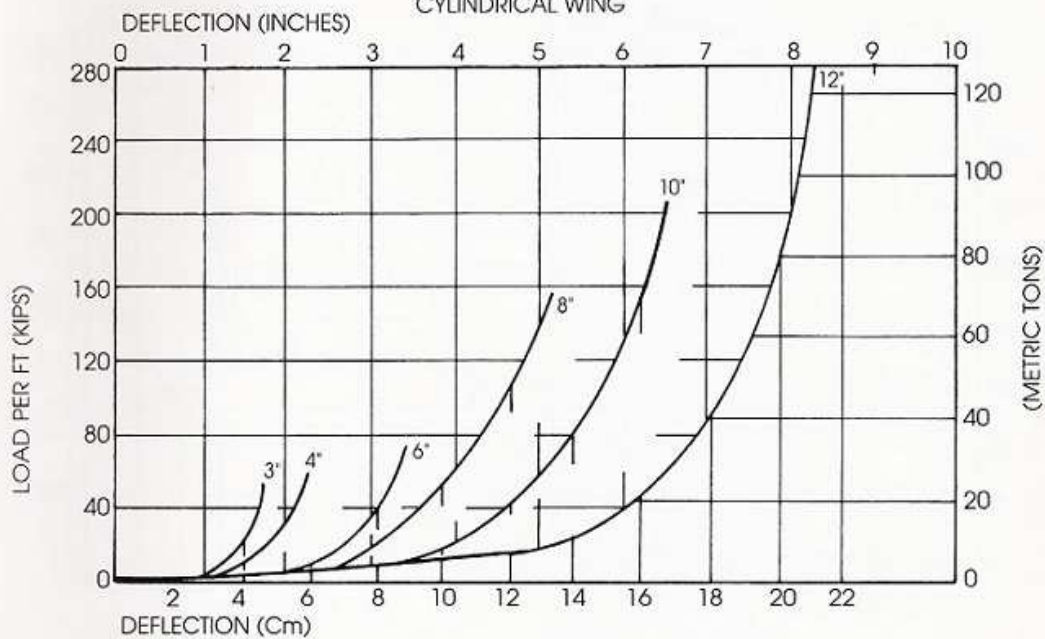
CYLINDRICAL WING TYPE

LENGTHS UP TO 20 FT. OTHER SIZES AVAILABLE ON REQUEST.



PART N°	A	BORE	C	D	E	Wt./Ft	R/E
UNITS	INCHES					lbs.	Kip/Ft Kip
F7-0000	3	1	6	.75	1.5	4.3	25
F7-8000	4	2	7.5	1.0	2.25	10	19.5
F7-1000	6	3	9	1.5	3	15.5	13.5
F8-1000	8	4	12	2.0	4	30	11
F8-4000	10	5	15	2.5	5	44	9
F7-3000	12	6	18	3.0	6	58.5	6.3

APPROXIMATE LOAD/ENERGY, DEFLECTION CURVES FOR MORSE STANDARD CYLINDRICAL WING

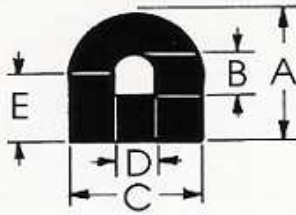


Morse Rubber

EXTRUDED FENDERS

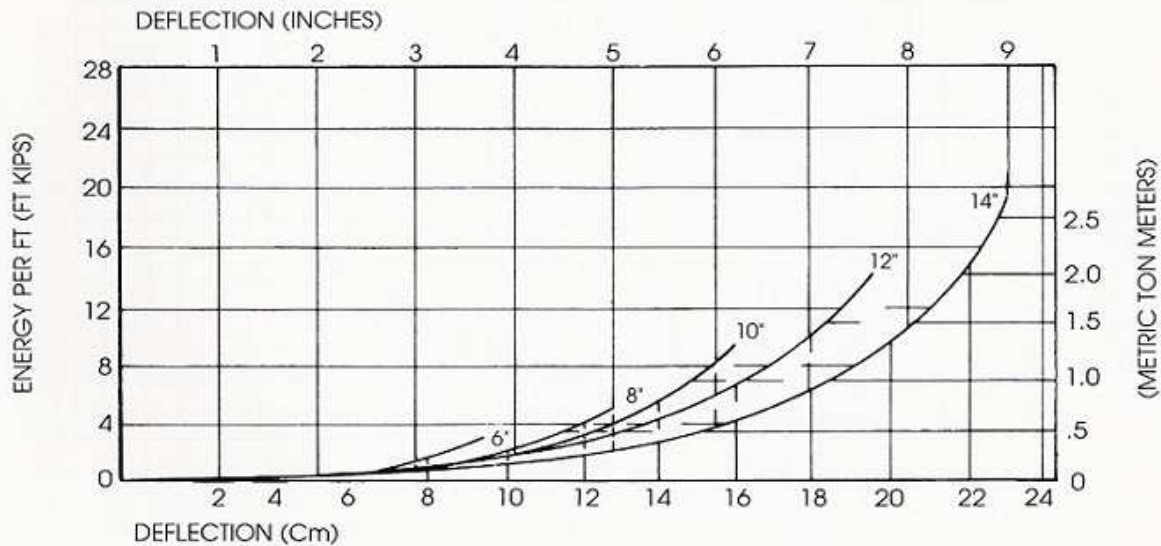
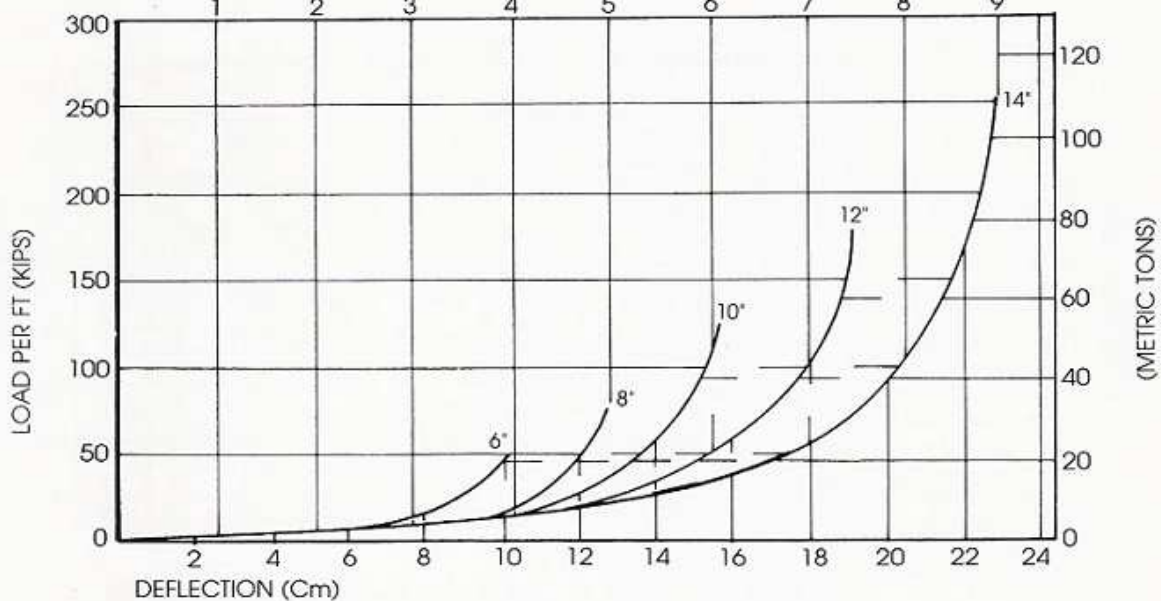
"D" SHAPE-"D" BORE TYPE

LENGTHS UP TO 20 FT. OTHER SIZES AVAILABLE ON REQUEST.



PART N°	A	B	C	D	E	Wt/Ft	R/E
UNITS	INCHES					lbs.	Kip/Ft Kip
G5-4000	6	3	5	2.5	3	11.5	15.2
F9-0000	8	4	8	4	4	22	10
G0-7000	10	5	10	5	5	38	8.6
F9-7000	12	6	12	6	6	54	7.7
G0-6000	14	7	14	7	7	73	4.2

APPROXIMATE LOAD/ENERGY DEFLECTION CURVES FOR MORSE STANDARD "D" SHAPE AND "D" BORE DEFLECTION (INCHES)

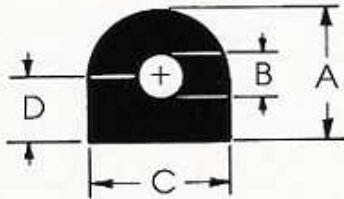


Morse Rubber

EXTRUDED FENDERS

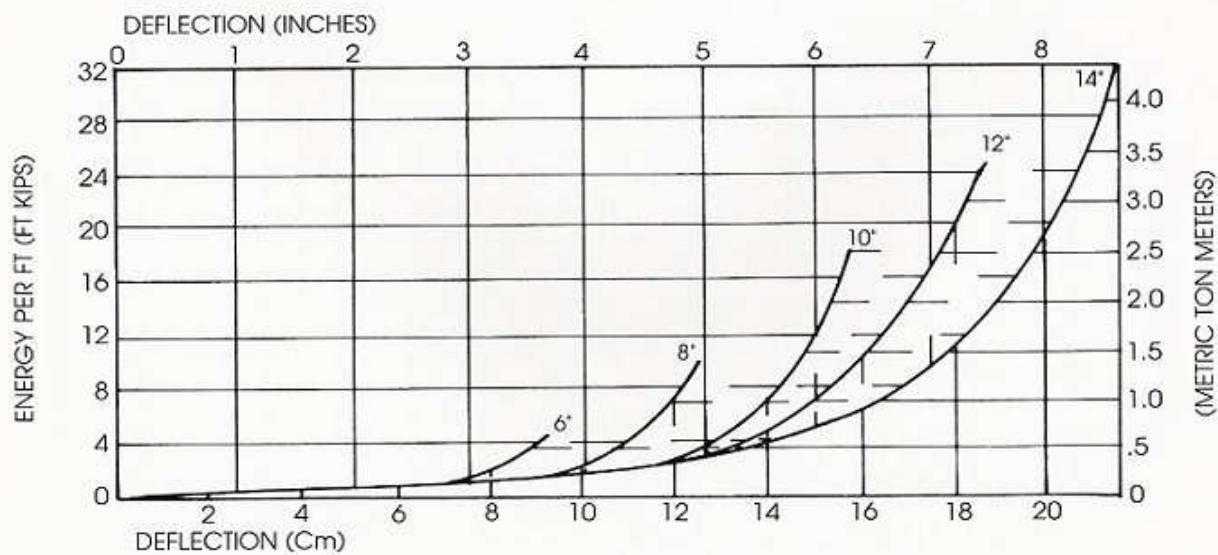
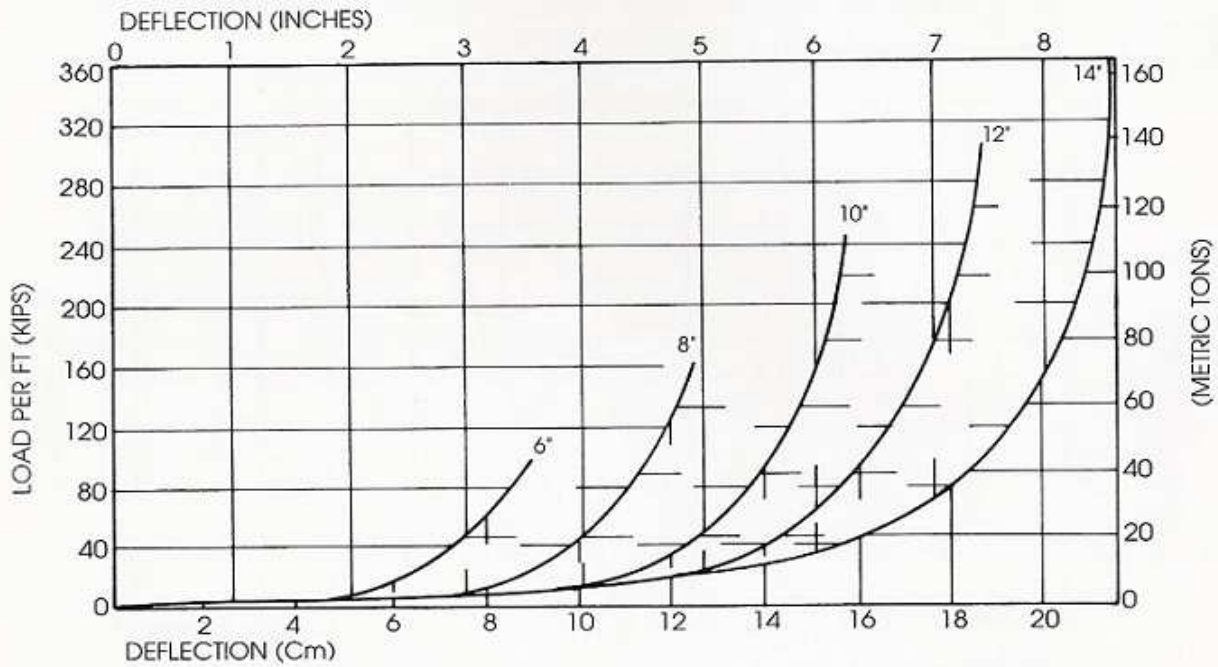
"D" SHAPE-"O" BORE TYPE

LENGTHS UP TO 20 FT. OTHER SIZES AVAILABLE ON REQUEST.



PART N°	A	B	C	D	Wt./ft	R/E
UNITS	INCHES				lbs.	Kip/Ft Kip
F9-2000	6	2.5	5	3	11.5	15.2
F9-5000	8	3	8	4	22	10
G0-5000	10	4	10	5	38	8.6
F9-3000	12	5	12	6	54	7.7
F9-8000	14	6	14	7	73	4.2

APPROXIMATE LOAD/ENERGY DEFLECTION CURVES FOR MORSE STANDARD "D" SHAPE AND "O" BORE

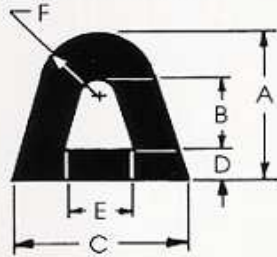


Morse Rubber

EXTRUDED FENDERS

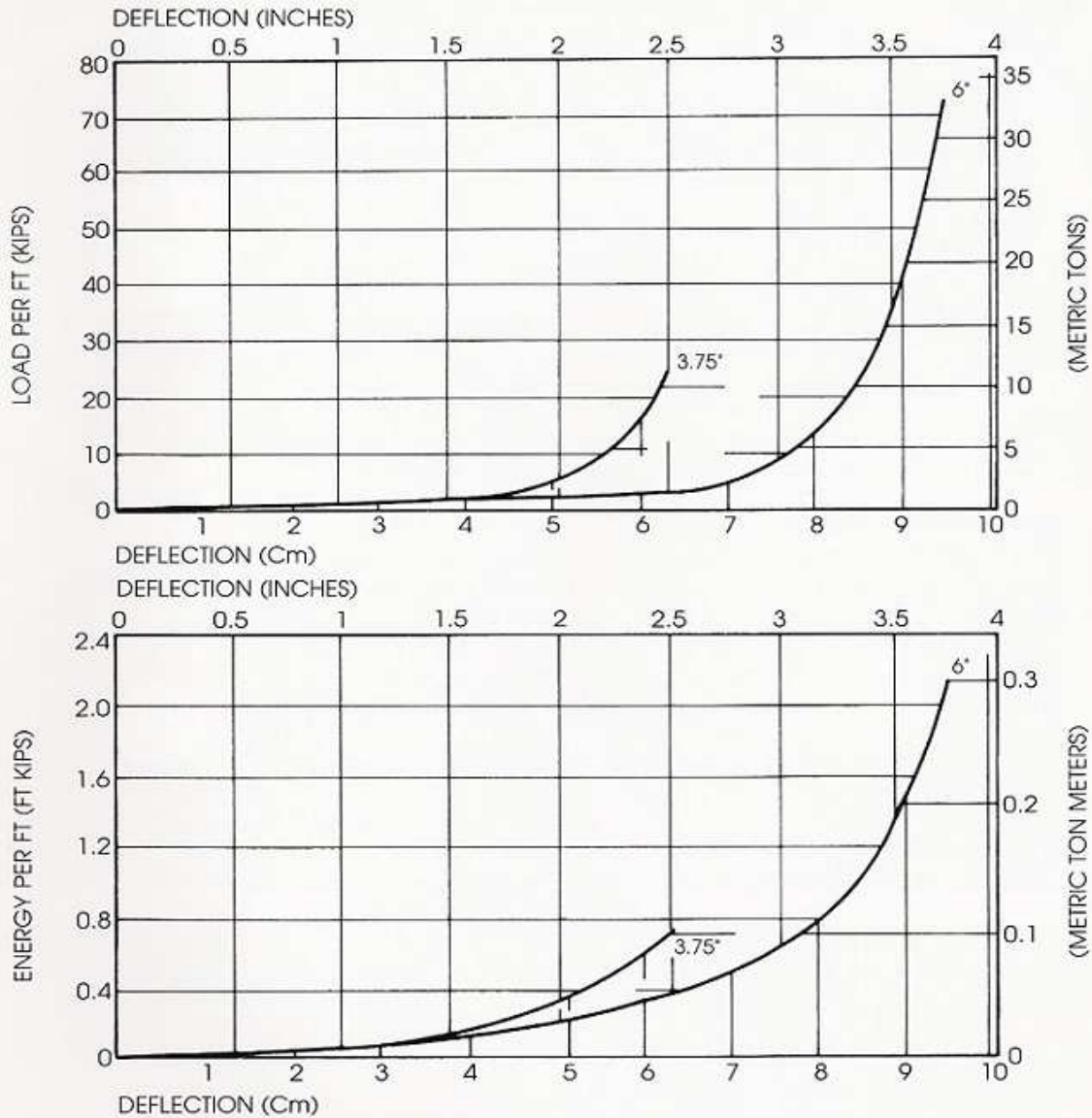
SLOPE SIDE "D" TYPE

LENGTHS UP TO 20 FT. OTHER SIZES AVAILABLE ON REQUEST.



PART N°	A	B	C	D	E	F	Wt/Ft	R/E
UNITS	INCHES						lbs.	Kip/FtKip
F9-4000	3.75	2.25	4.50	.75	2	1.50	4.5	16.7
F9-1000	6	3	6.75	1.25	2.87	2.37	12.3	13.3

APPROXIMATE LOAD/ENERGY DEFLECTION CURVES FOR MORSE STANDARD SLOPE SIDE "D" SHAPE

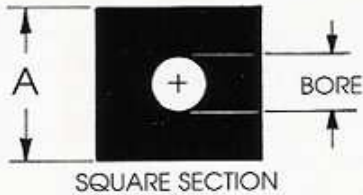


Morse Rubber

EXTRUDED FENDERS

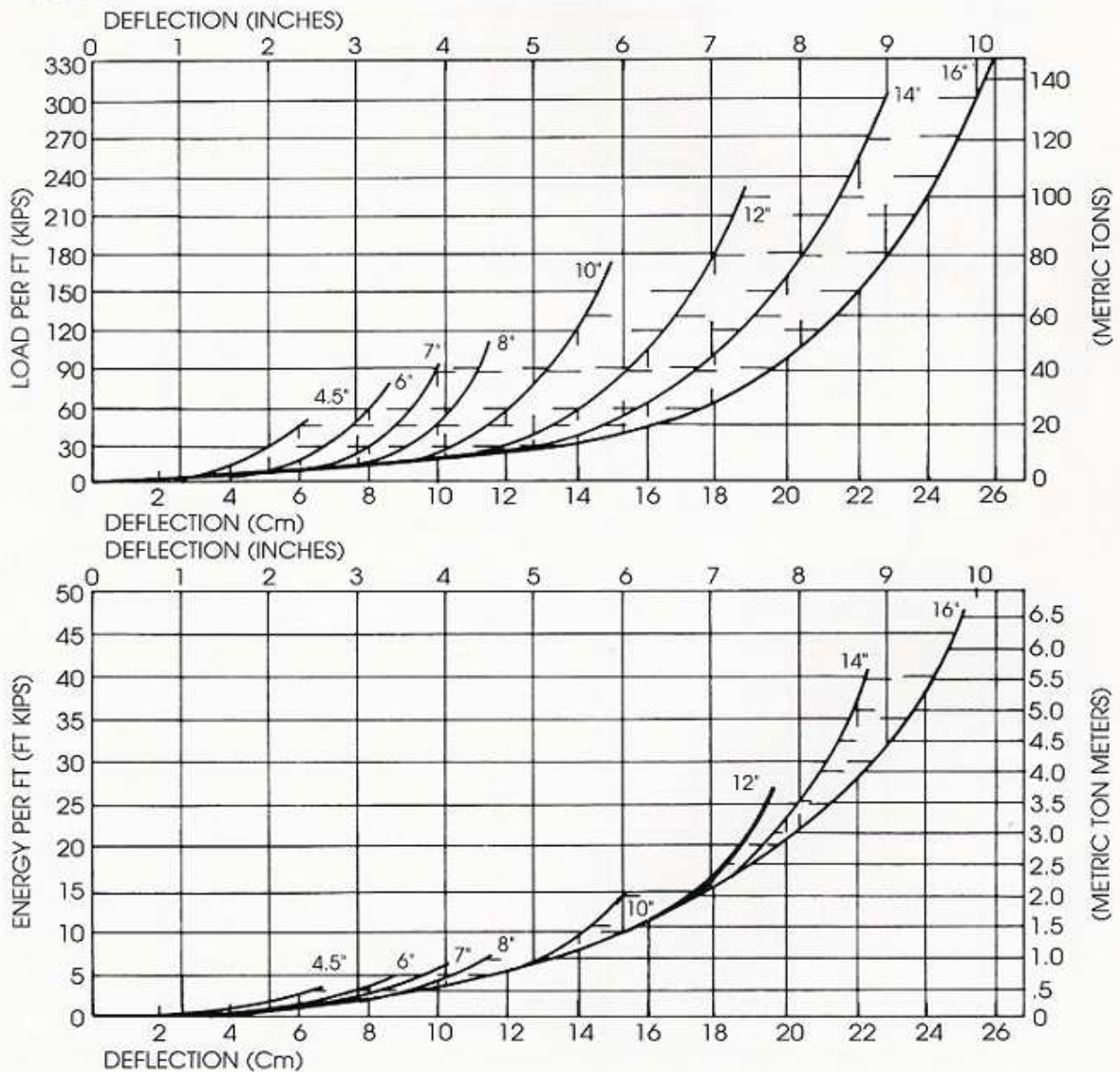
SQUARE TYPE

LENGTHS UP TO 20 FT. OTHER SIZES AVAILABLE ON REQUEST.



PART N°	A	BORE	WT/FT	R/E
UNITS	INCHES		lbs.	Kip/Ft Kip
F6-0000	4.5	1.5	4.5	2.0
F6-2000	6	2	1.7	16
F5-6000	7	2.5	22.5	12.5
F5-0000	8	3	29.5	10
F5-7000	10	4	45	8.5
F5-1000	12	5	63	7
F5-2000	14	6	81	3.7
G6-2000	16	7	112	2.5

APPROXIMATE LOAD/ENERGY DEFLECTION CURVES FOR MORSE STANDARD SQUARE SHAPE



Morse Rubber

TYPE-CB FENDERS



Morse Rubber

TYPE-W FENDERS

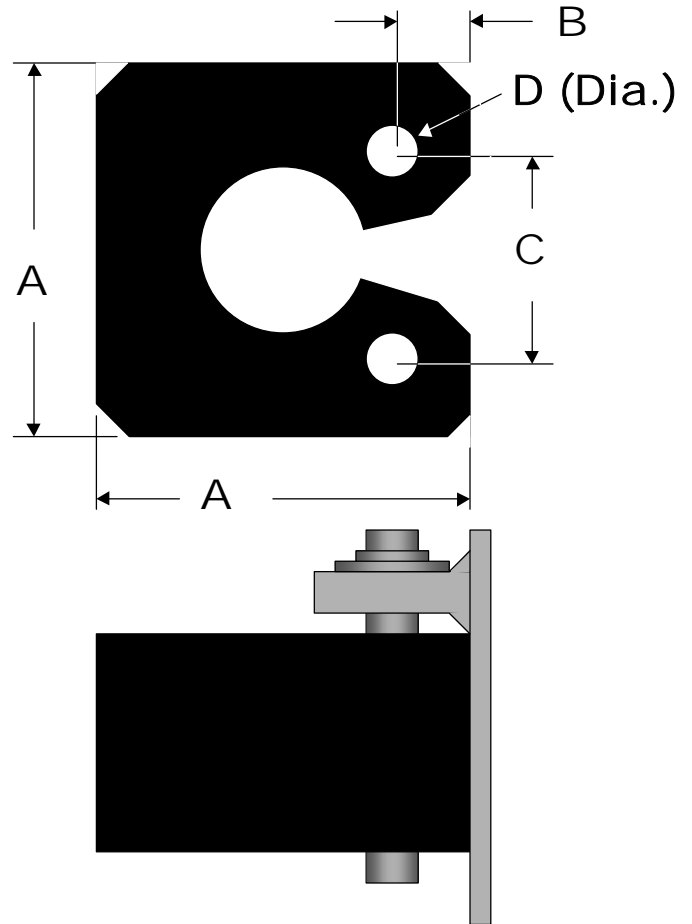


Morse Rubber

KEYHOLE BLOCK FENDERS

Trellex Keyhole Block Fenders are made of tough wear resistant synthetic rubber to withstand the most severe service.

The modular design provides wide flexibility in design, allowing custom fit to hull curves and varying vertical coverage requirements.



Type	Dimensions (mm)			
	A	B	C	D
8E	200	40	140	20
8A	250	50	150	20
8B	304	60	184	25
8C	350	70	210	25



Morse Rubber LLC
3588 Main St. Keokuk, IA 52632
Tel: 319 524 8430 Fax: 319 524 7290