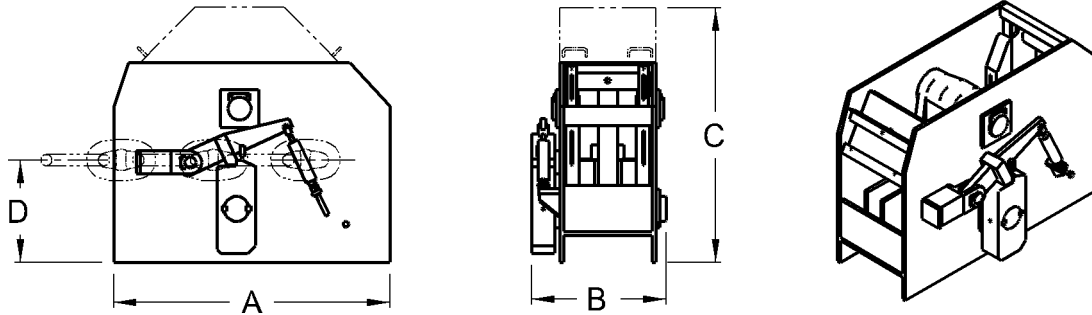




# Releasable Chain Stopper



| Model Number | Units of Measure | Maximum Chain Size | Chain Breaking Strength | A    | B    | C       | D   | Weight   |
|--------------|------------------|--------------------|-------------------------|------|------|---------|-----|----------|
| RCS-52       | Inches           | 3- 1/4             | 1,450,800 lbs           | 72   | 36   | 66- 1/4 | 28  | 5700 lbs |
|              | MM               | 83                 | 6454 kN                 | 1829 | 914  | 1683    | 711 | 2585 Kg  |
| RCS-64       | Inches           | 4                  | 2,107,200 lbs           | 89   | 44   | 82      | 34  | 7100 lbs |
|              | MM               | 102                | 9374 kN                 | 2261 | 1118 | 2083    | 864 | 3220 Kg  |

## Standard Features

- Designed for breaking strength of chain
- Ideal for FPSO's and shuttle tankers
- Releasable at loads up to proof test value of chain
- Hydraulic release mechanism
- Weld down base
- Special pawl provides for lower contact stress in chain
- Smith Berger Quality

## Optional Features

- Other sizes available
- Bolt down base
- Third party certification
- Pneumatic release mechanism
- Paint to your specification
- Bellmouth chock for chain inlet
- Load monitoring system

***We will custom engineer any of our products to suit YOUR requirements!***

7915 10th Ave. S., Seattle, WA 98108 USA - Tel: 206-764-4650 - Fax: 206-764-4653 - Website: [www.SmithBerger.com](http://www.SmithBerger.com)