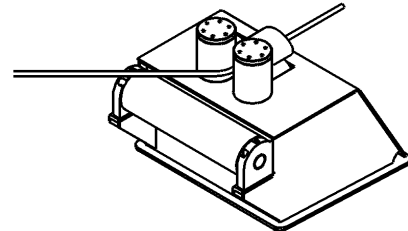
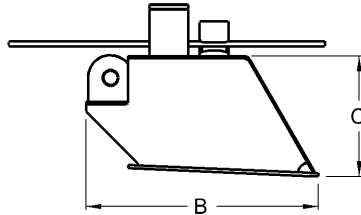
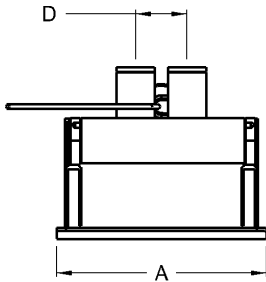


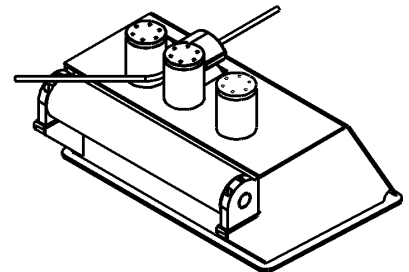
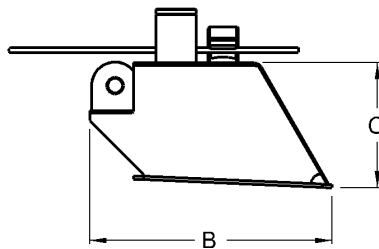
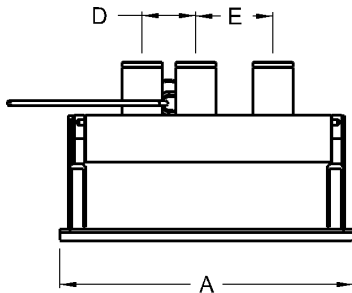


Tow Pin Assemblies

Bulwark Mounted Units - 2 & 3 Pins



Model Number	Units of Measure	Maximum Wire Size	Pin Dia.	Pin Height	Roller Diameter	A	B w/ Hook	B w/o Hook	C	D
9T214	Inches	1- 3/4	9	12	14	48- 1/2	66	54	33- 1/2	13
	MM	44	229	305	356	1232	1676	1372	851	330
2T224	Inches	2- 1/4	12	12	24	52	81	69	37- 1/2	16
	MM	57	305	305	610	1321	2057	1753	953	406
6T230	Inches	2- 3/4	16	16	30	62	91	79	42	20
	MM	70	406	406	762	1575	2311	2007	1067	508



Model Number	Units of Measure	Maximum Wire Size	Pin Dia.	Pin Height	Roller Diameter	A	B w/ Hook	B w/o Hook	C	D	E
9T314	Inches	1- 3/4	9	12	14	64	66	54	33- 1/2	13	19
	MM	44	229	305	356	1626	1676	1372	851	330	483
12T324	Inches	2- 1/4	12	12	24	72	81	69	37- 1/2	16	22
	MM	57	305	305	610	1829	2057	1753	953	406	559
16T330	Inches	2- 3/4	16	16	30	88	91	79	42	20	26
	MM	70	406	406	762	2235	2311	2007	1067	508	660

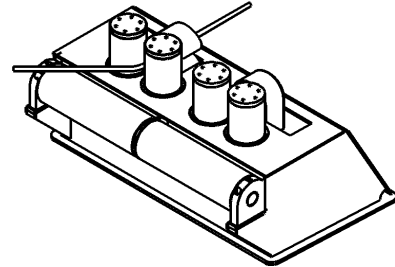
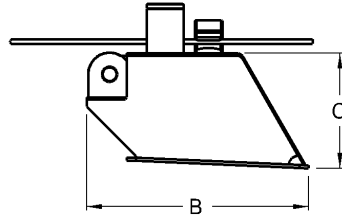
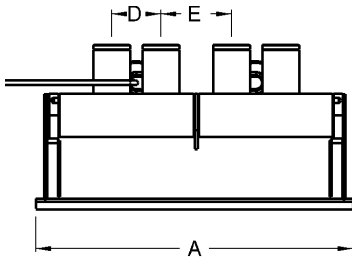
*We will custom engineer any of our products to suit **YOUR** requirements!*



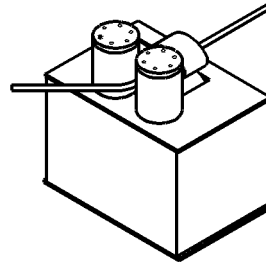
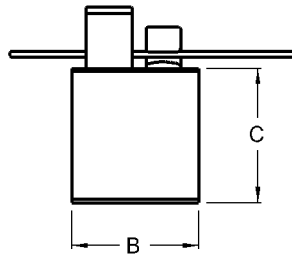
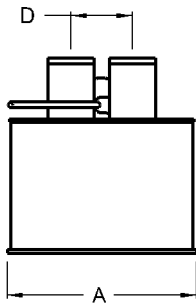
Tow Pin Assemblies

Bulwark Mounted Units- 4 Pins

Flush Mounted Units - 2 Pins



Model Number	Units of Measure	Maximum Wire Size	Pin Dia.	Pin Height	Roller Diameter	A	B w/ Hook	B w/o Hook	C	D	E
9T414	Inches	1- 3/4	9	12	14	80	66	54	33- 1/2	13	19
	MM	44	229	305	356	2032	1676	1372	851	330	483
12T424	Inches	2- 1/4	12	12	24	90	81	69	37- 1/2	16	22
	MM	57	305	305	610	2286	2057	1753	953	406	559
16T430	Inches	2- 3/4	16	16	30	108	91	79	42	20	26
	MM	70	406	406	762	2743	2311	2007	1067	508	660



Model Number	Units of Measure	Maximum Wire Size	Pin Dia.	Pin Height	A	B w/ Hook	B w/o Hook	C	D
9T2X12	Inches	1.75	9	12	44.5	28	16	33	13
	MM	44	229	305	1130	711	406	838	330
12T2X12	Inches	2- 1/4	12	12	52	33	21	37- 1/2	16
	MM	57	305	305	1321	838	533	953	406
16T2X16	Inches	2- 3/4	16	16	60	38	26	42	20
	MM	70	406	406	1524	965	660	1067	508

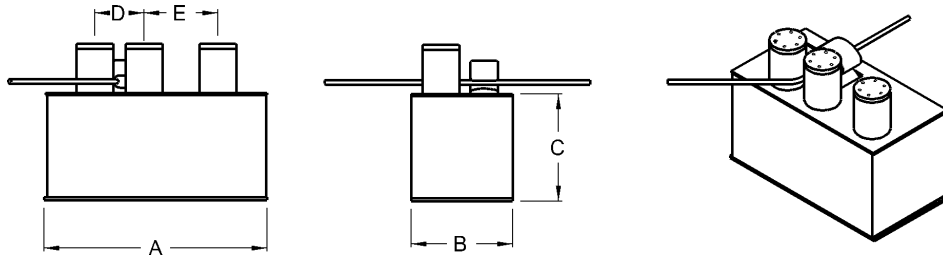
*We will custom engineer any of our products to suit **YOUR** requirements!*

7915 10th Ave. S., Seattle, WA 98108 USA - Tel: 206-764-4650 - Fax: 206-764-4653 - Website: www.SmithBerger.com

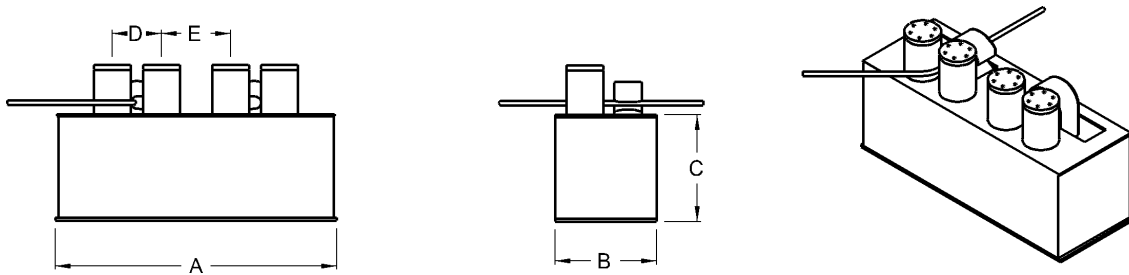


Tow Pin Assemblies

Flush Mounted Units-3 & 4 Pins



Model Number	Units of Measure	Maximum Wire Size	Pin Dia.	Pin Height	A	B w/ Hook	B w/o Hook	C	D	E
9T3X12	Inches	1- 3/4	9	12	60	28	16	33	13	19
	MM	44	229	305	1524	711	406	838	330	483
12T3X12	Inches	2- 1/4	12	12	72	33	21	37- 1/2	16	22
	MM	57	305	305	1829	838	533	953	406	559
16T3X16	Inches	2- 3/4	16	16	86	38	26	42	20	26
	MM	70	406	406	2184	965	660	1067	508	660



Model Number	Units of Measure	Maximum Wire Size	Pin Dia.	Pin Height	A	B w/ Hooks	B w/o Hooks	C	D	E
9T4X12	Inches	1- 3/4	9	12	76	28	16	33	13	19
	MM	44	229	305	1930	711	406	838	330	483
12T4X12	Inches	2- 1/4	12	12	90	33	21	37- 1/2	16	28- 1/2
	MM	57	305	305	2286	838	533	953	406	724
16T4X16	Inches	2- 3/4	16	16	106	38	26	42	20	26
	MM	70	406	406	2692	965	660	1067	508	660

*We will custom engineer any of our products to suit **YOUR** requirements!*