

FIXED REACH TOP LOADING ARM | E2110



5 year limited warranty on D2000 World Series swivel joints.

Designed specifically for single compartment tank trucks and railroad tank cars.

Accurate spotting of railcar or tank truck is required. See spotting map.

Standard vertical range of motion for the loading arm is 55° (park position) to -20° (load position). Maximum vertical range of movement up to 95° with spring cylinders.

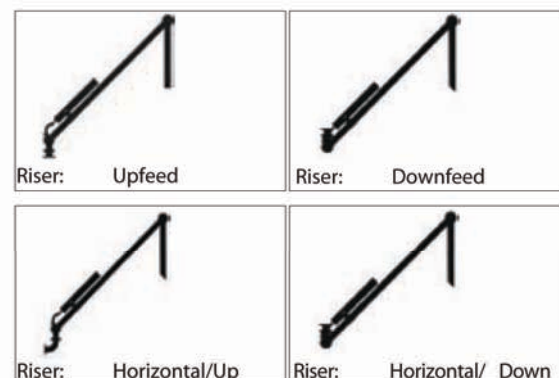
Standard arms feature the D2000 World Series swivel joints for ultra low maintenance & the easy to adjust spring cylinder balance.

☞ Pipe size: 2" through 12"

☞ Materials: Carbon steel,
Carbon steel / Aluminum, Stainless steel

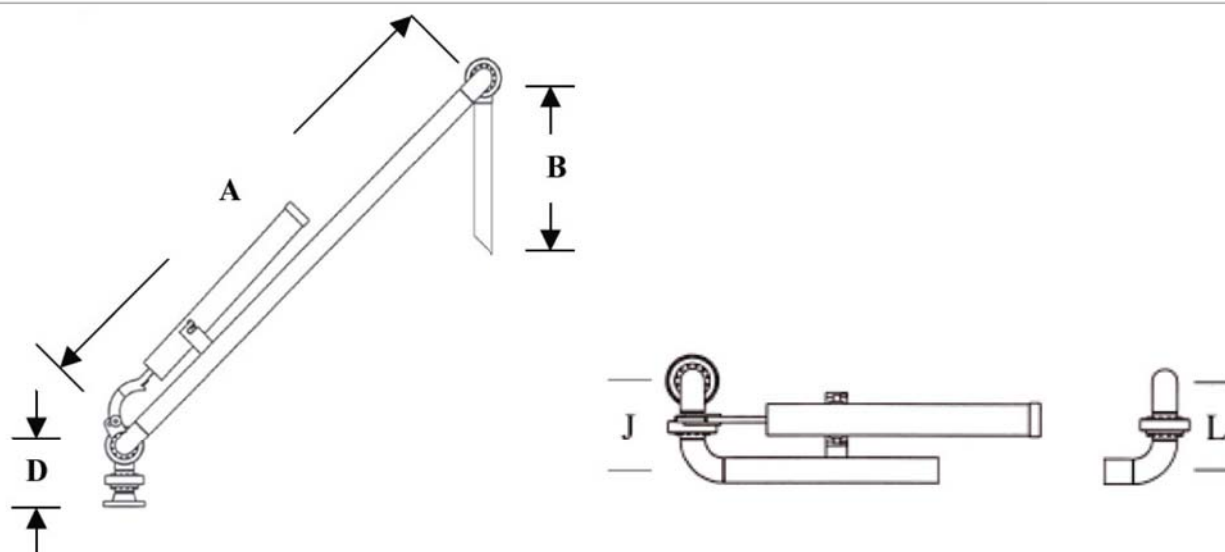
Riser connection options

Loading arms shown in the park position



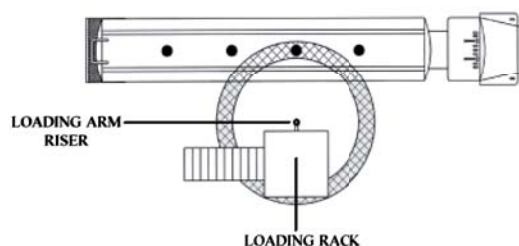
E2110

Dimensions and technical data



Dimensions

	D	J	L
2"	9.99"	10.11	10.11"
3"	11.86"	13.11	13.11"
4"	14.11"	16.11	16.11"



E2110

2"	9' +
3"	10' +
4"	12' +

*Better by
Design*

Whilst the content of this leaflet has been edited with the greatest care, we are not liable for any errors and/or omissions. Subject to change without notice.

ILTA
SUPPLIER

MEMBER
PEI
NORTH AMERICA

EMCO WHEATON

A Gardner Denver Product

EMCO WHEATON USA INC

9111 Jackrabbit Road · Houston, Texas 77095 · USA

Phone +1 281 856-1300 · Fax +1 281 856-1325

www.emcowheaton.com · sales-us@emcowheaton.com