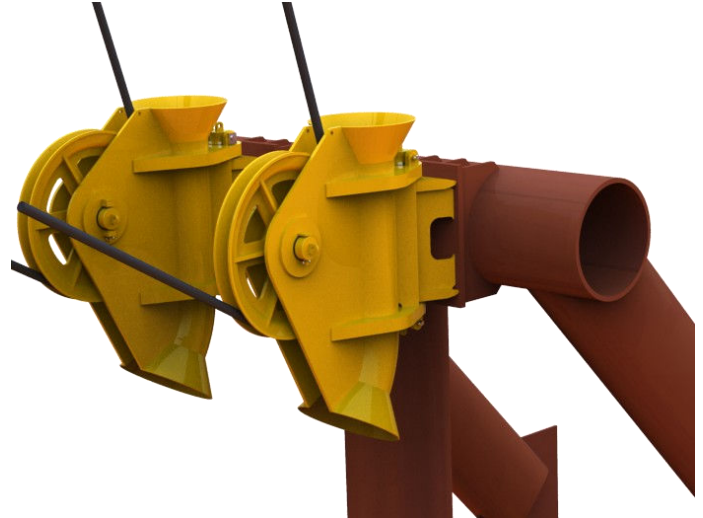


RISER PULL IN SHEAVES

Anadarko LUCIUS and HEIDELBERG Spars

- Designed for 3.5" Wire Rope with 135 Degrees Wrap on the Sheave
- Load Tested to 904,000 LBS Resultant Load
- Cast Steel Sheave with Hardened Rope Groove
- Seawater Lubricated Synthetic Bearings in Sheave and Swivelhead
- Funnel and Ramp to Ease Wire Passage
- Customized Mounting Base to Aide Installation



Original Concept



Installation in Pori, Finland



Pass Through Test in Seattle, USA

Smith Berger Marine, Inc. - Mooring & Towing Solutions

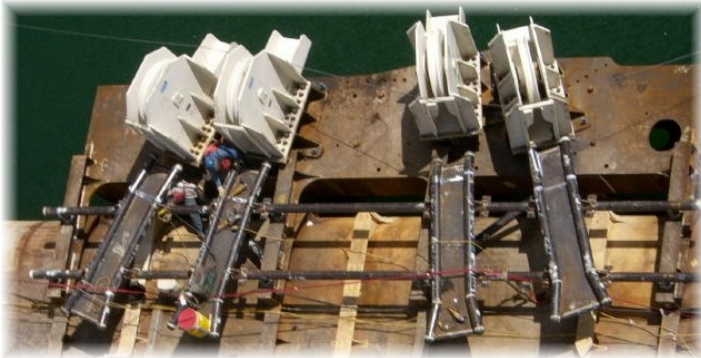
7915 10th Ave. S., Seattle, WA 98108 USA

Tel. 206.764.4650 - Toll Free 888.726.1688 - Fax 206.764.4653

E-mail: sales@smithberger.com - Web: www.smithberger.com

Anadarko INDEPENDENCE HUB Semi-Sub Platform

- Designed for 3" Wire Rope with 85 Degrees Wrap on the Sheave
- Load Tested to 440,800 LBS Line Tension
- Cast Steel Sheave with Hardened Rope Groove
- Seawater Lubricated Synthetic Bearings
- Ramp to Ease Wire Rope Socket Passage
- Customized Mounting Base for Bolted Installation
- Two Coat Epoxy Coating for Subsea Use



Chevron BLIND FAITH Semi-Sub Platform

- Designed for 2" Wire Rope with 90 Degrees Wrap on the Sheave
- Load Tested to 318,000 LBS Line Tension
- Cast Steel Sheave with Hardened Rope Groove
- Seawater Lubricated Synthetic Bearings
- Flag Block, Horizontal and Vertical Styles
- Bolted Installation
- Two Coat Epoxy Coating for Subsea Use



Flag Blocks Ready for Shipment



Load Testing in Seattle, USA

Smith Berger Marine, Inc. - Mooring & Towing Solutions

7915 10th Ave. S., Seattle, WA 98108 USA

Tel. 206.764.4650 - Toll Free 888.726.1688 - Fax 206.764.4653

E-mail: sales@smithberger.com - Web: www.smithberger.com