

Marine loading arm – B0300

The B0300 marine loading arm has been designed for any kind of special application where it is essential to keep the same bore size throughout the entire product pipe line, for either economical or technical reasons, e.g. when loading cryogenic products or for piggable or PTFE-lined systems. This design has proven its reliability since many years.

The B0300 design includes a special support structure for the stand post, inboard and outboard arm. Thus mechanical loads other than pipe dead-weight and internal pressure are separated from the product pipe. Additionally the design also provides for an optimum in regard to operational safety aspects, low weight of the arm and lowest wind loads imposed to the dock structure.

The arm is balanced by a rigid link pantograph system with independent counterweights balancing the inboard- and outboard arm. This provides accurate balance throughout the entire operational range.

The advantages in comparison with hose loading facilities are ease of handling, higher availability/flexibility, less manpower and minimum maintenance, resulting in maximum operational safety and minimum cost of ownership.

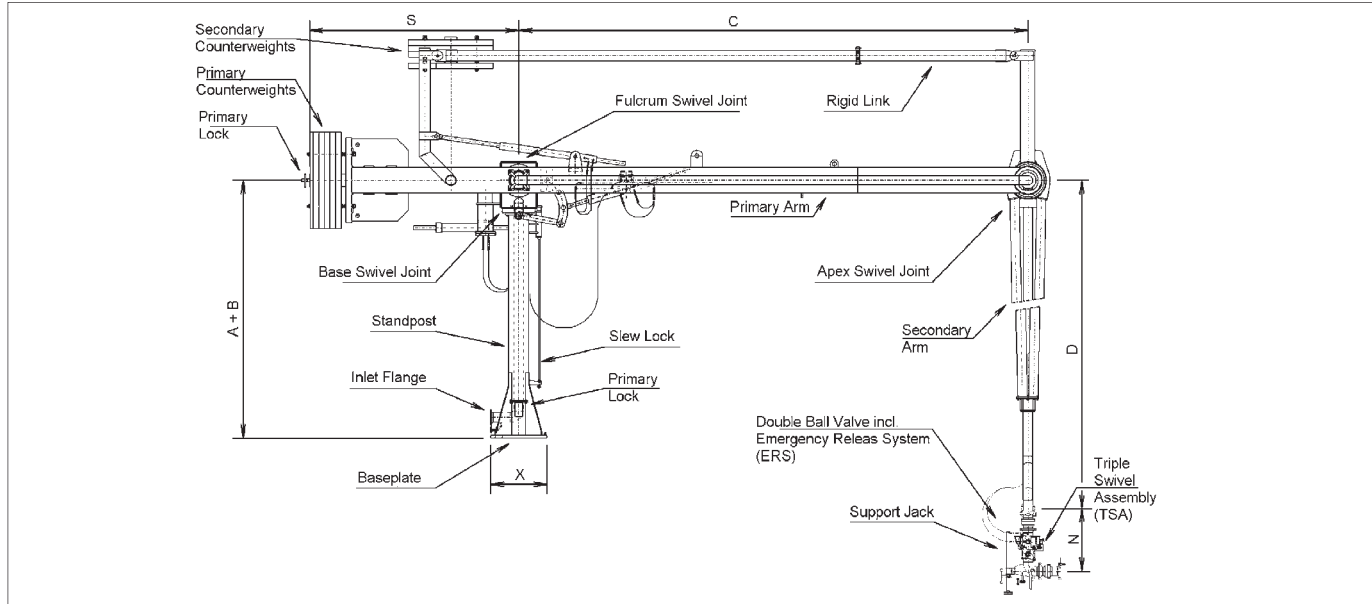
The B0300 can be manually or hydraulically operated. A variety of highly sophisticated accessories are available.



- sizes from 4" up to 16"
- for 150 lbs or 300 lbs pressure ratings
- materials:
carbon steel, low temperature steel, stainless steel
- temperature range:
from -55 °F up to +390 °F
- for special applications we offer engineered solutions
- EMCO high performance swivel joints

B0300

Dimensions and technical data



Technical data (standard) – excl. emergency release system

NB	A + B ft	X ft	C ft	D ft	N ft	S ft	flow rate gal/min	weight lbs	bending moment lb ft
4"	18.0	3,3	26.0	26.0	3.0	15.0	1,320	35,200	240,000
6"	18.0	3,3	26.0	26.0	3.3	15.0	2,640	36,300	250,000
8"	18.0	4,9	26.0	26.0	4.4	15.0	4,850	41,800	270,000
10"	23.0	4,9	36.0	30.0	5.7	20.0	7,500	79,200	540,000
12"	23.0	4,9	36.0	33.0	6.9	20.0	11,000	86,900	560,000
16"	23.0	6,6	36.0	36.0	7.9	20.0	17,500	107,800	640,000

Design

- fully balanced with independent counterweights for inboard and outboard arm
- special support frame to reduce mechanical loads
- light weight design
- swivel joints either welded-in or flanged
- for transfer of mineral oil, chemicals and liquefied gases
- seals available in Buna-N, Viton, PTFE or other specific materials
- piggable product pipe
- dedicated material for product pipe

Accessories

- envelope warning system
- drain connections
- emergency release system (ERS)
- manual or hydraulic operation
- manual or hydraulic quick coupler
- insulation flange
- nitrogen purge line
- stripping line
- vacuum breaker
- vapour return line



EMCO WHEATON

A Gardner Denver Product

Whilst the content of this leaflet has been edited with the greatest care, we are not liable for any errors and/or omissions. Subject to change without notice.

EMCO WHEATON USA INC
 9111 Jackrabbit Road · Houston, Texas 77095 · USA
 Phone +1 281 856-1300 · Fax +1 281 856-1325
 www.emcowheaton.com · sales-us@emcowheaton.com